

A National Approach to Palliative Care Education: A Suite of Learning Essentials for Different Settings.

José Pereira^{1,2}, Kathy Downer¹, Brady Riordan¹ on behalf of Pallium Canada Team

¹ Pallium Canada, ² College of Family Physicians of Canada

info@pallium.ca www.pallium.ca

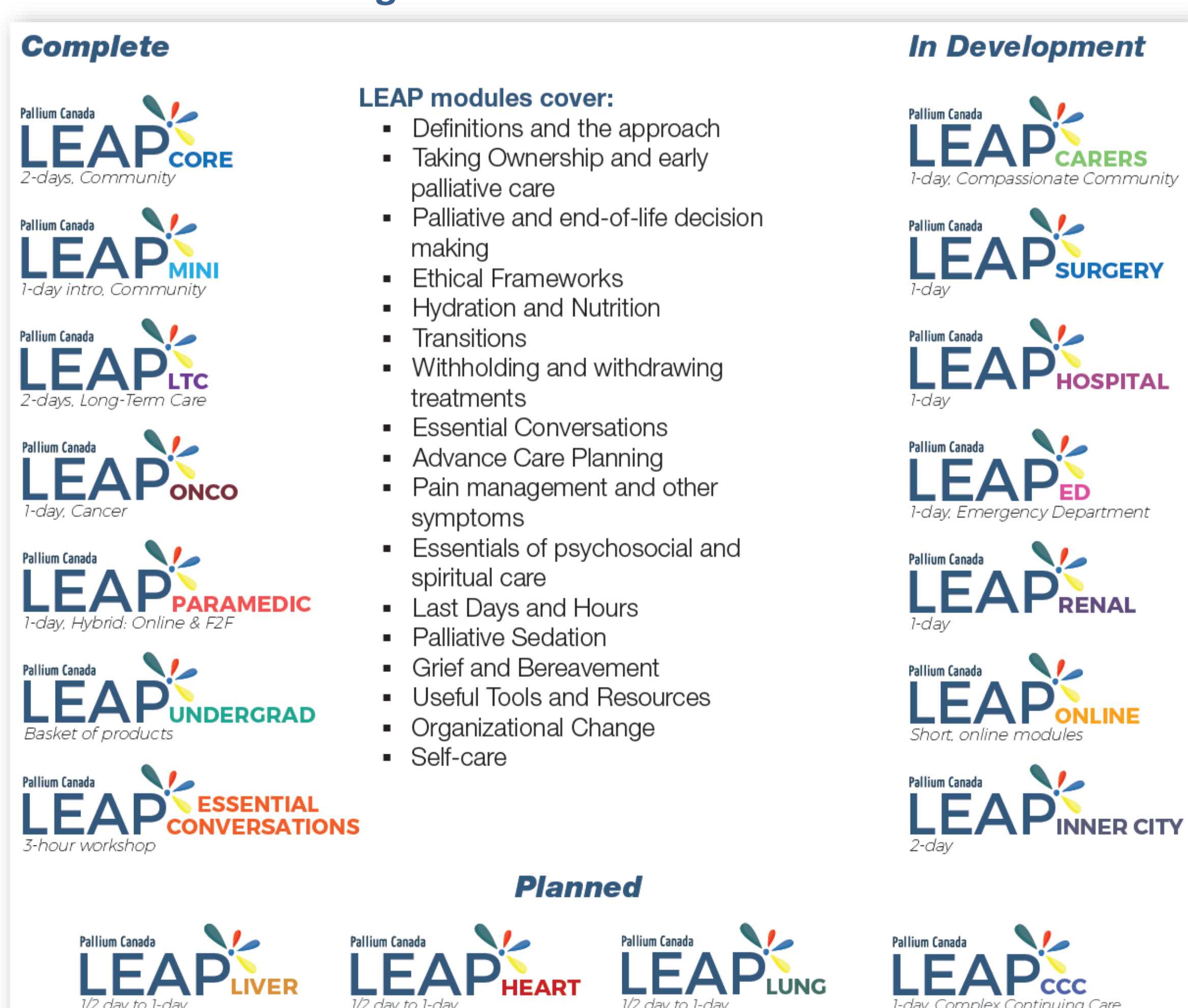
Who is Pallium Canada?

- Pallium Canada is a pan-Canadian, non-profit organization.
- Goal is to build primary or generalist-level palliative care capacity by diffusing the Palliative Care Approach.
- Consists of a large community of palliative care educators, content experts, clinicians, administrators and leaders across Canada and internationally. Its main hub is in Ottawa.
- Governed by a Board of Directors made of community, business, legal and clinical leaders. Has a National Advisory Committee that includes educators, content experts, administrators and family members.

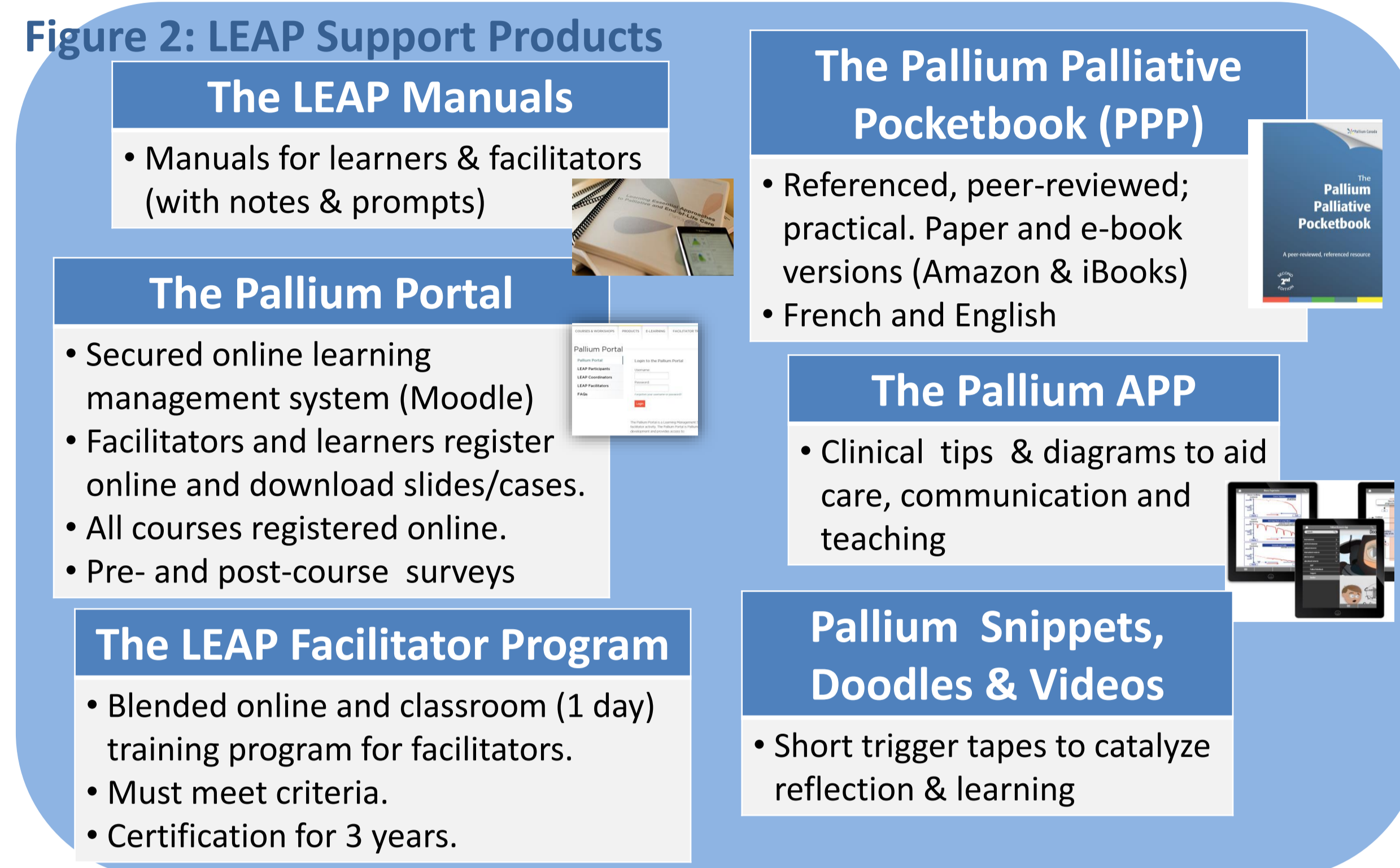
What are the LEAP Courses?

- The Learning Essentials Approaches to Palliative Care (LEAP) are a suite of interprofessional courses and workshops that address generalist-level competencies for health care professionals working in different settings (See Figure 1).
- The courses specifically target physicians (from family physicians to oncologists, internists, nephrologists, cardiologists and other specialists), nurses, pharmacists, paramedics, support workers and social workers. Other professionals may also participate.
- Course lengths vary: from 3-hour and half-day workshops; to one- and two-day courses and online modules.
- Use different learning approaches and aids, including case-based learning; small and large group learning; reflective exercises, theory bursts (overviews) and short trigger videos.
- Classroom, online and blended (e.g. LEAP Paramedics) programs.
- LEAP Undergraduate is a basket: educators select modules and products (e.g. Snippets) that are applicable to their curriculum.
- **Guiding principles:**
 - Interprofessional
 - Practical
 - Extensively peer reviewed (using blinded process)
 - Modular and flexible delivery format
 - Regularly updated
 - 1 facilitator per 10 learners
 - Standardization with flexibility to address individual patient needs and local circumstances.
 - English and French
 - Integrate Indigenous peoples' cultural sensitivity

Figure 1: LEAP Courses



What are the LEAP support products?



What are the goals of LEAPs?

- Competency acquisition.
- Showcase local palliative care services.
- Disseminate local, provincial and national resources (Speak Up)
- Improve collaboration between local services & professionals.
- Catalyze Quality Improvement (QI) locally and individually.

How are LEAP courses developed?

- Developed by content experts and end-users (learners & facilitators) from different disciplines across Canada.
- Ongoing iterative curriculum development process that involves 1) competency mapping & preparing learning objectives; 2) defining learning objectives based on competencies; 3) designing course and developing /identifying content; 4) initial peer review; 5) piloting and evaluations; 6) modifications; 7) extensive peer review; 8) further modifications; 9) formal launch; 10) ongoing evaluations and minor revisions as needed; and 11) major revisions every 3 to 4 years (return to "1")

To what extent are LEAPs spreading?

- See Figures 3 to 5

Figure 3: Certified LEAP facilitators (until Mar 2016)



Figure 4: LEAP courses (April 2015 to Mar 2016)

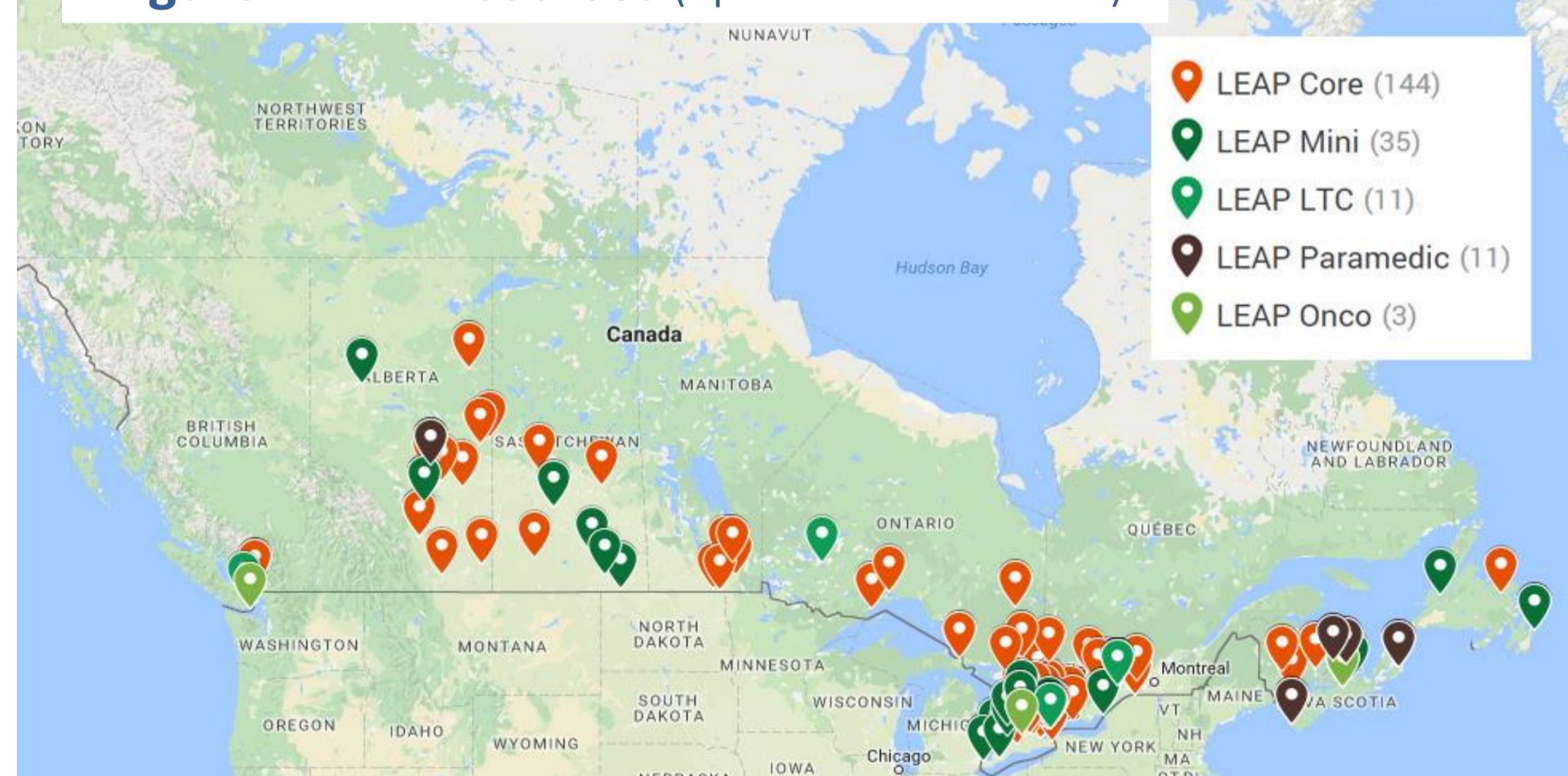


Figure 5: LEAP Learners (Nov 2015 to Mar 2016)

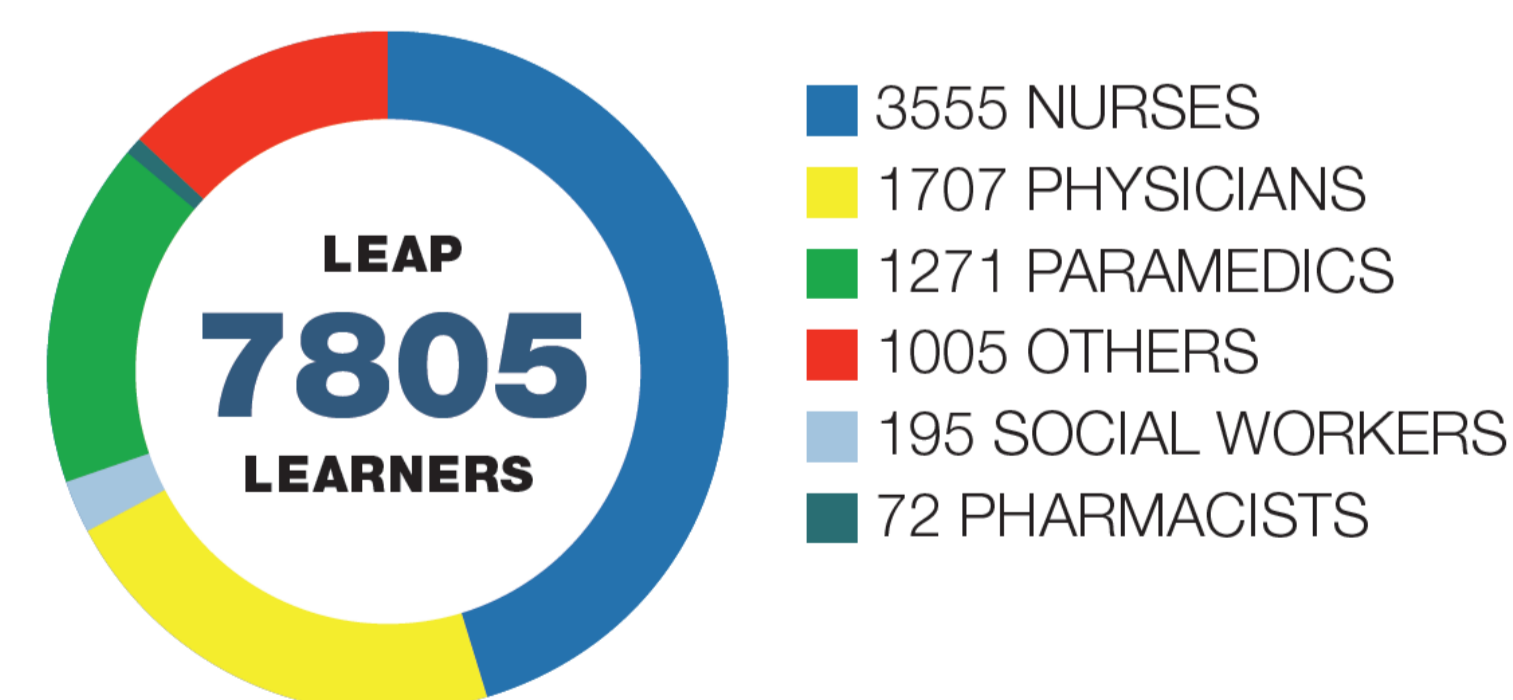
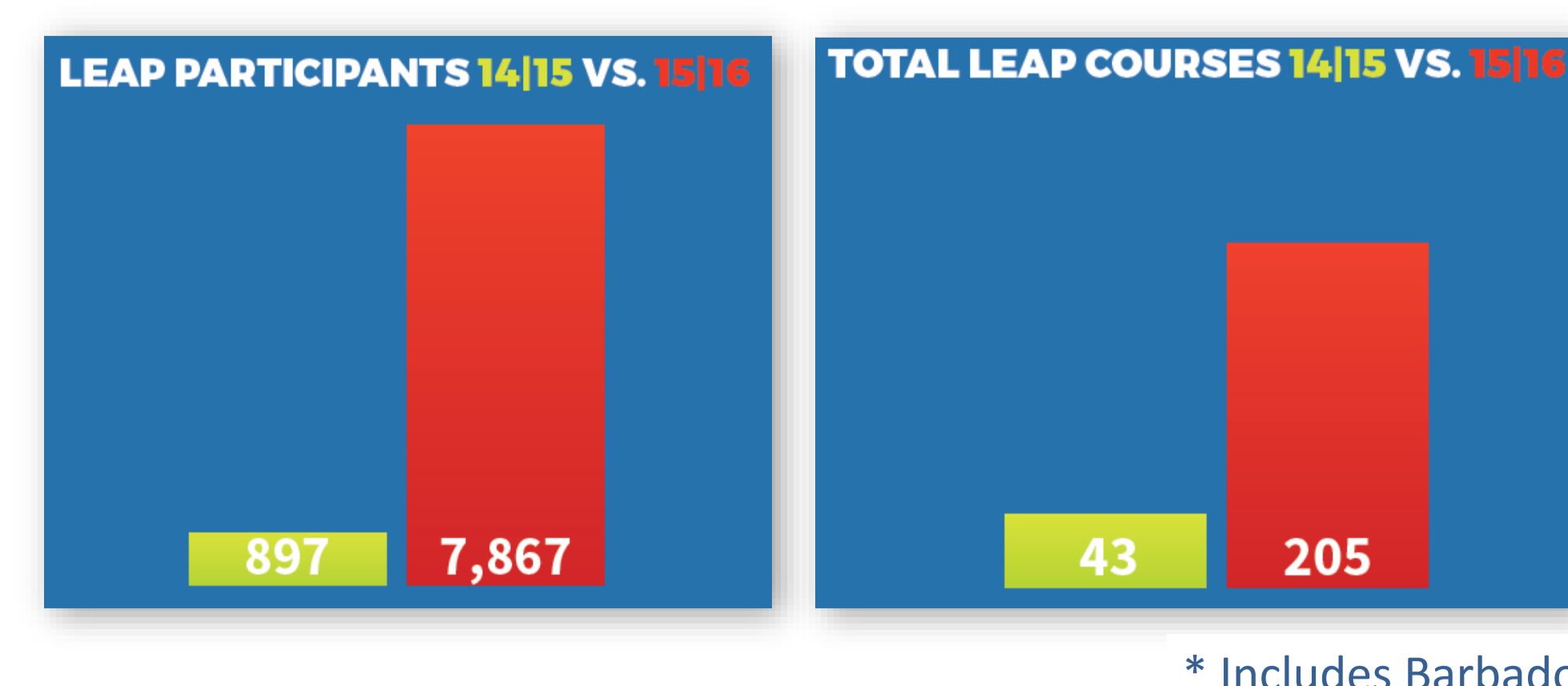


Figure 6: LEAP Courses & Learners (2014/2015 versus 2015/2016)



What is the LEAP reflection exercises and evaluation framework?

- Pre versus post course surveys & quiz to nurture learning.
- Knowledge Quiz, Attitudes Survey, Self-perceived comfort, Commitment to Change (post- course and 4-6 month post course), course evaluation, facilitator feedback

How are LEAPs' quality assured?

- Extensive peer review of products (blinded using SavvyDox.)
- Ongoing evaluations by learners and facilitators.
- Slides and modules "locked" (can only be altered with permission from Pallium Canada)- but facilitators can toggle between their material and LEAP PPT slides/material if they so wish.

What is the scalability model of LEAP?

- Courses organized locally by local organizers.
- Courses facilitated by local LEAP Facilitators (may get help from facilitator pool if help needed).
- Cost recovery for local organizers.

What are examples of partnerships?

- Over 30 regional, provincial, national and international partnerships. Examples include:
 - Cancer Care Ontario (INTEGRATE project and LEAP RENAL)
 - Paramedics of Nova Scotia and PEI (LEAP Paramedics)
 - Canadian Brain Tumor Foundation (online modules).
 - BC Center for Palliative Care.
 - Nova Scotia and Saskatchewan HPC Associations.
 - Bruyère Family Health Team
 - Yee Hong LTC home.
 - International collaborations in Caribbean, Japan, Portugal, Israel, Spain, South Africa.

Who funds Pallium Canada and LEAP?

- Mainly funded by Health Canada (2001, 2003-2007, 2014-2017)
- Course registration fees (cost-recovery model for Pallium and local organizer)
- Sale of PPP & cost-recovery with partners.
- Patrick Gillen Estate contribution (2012-2016)

